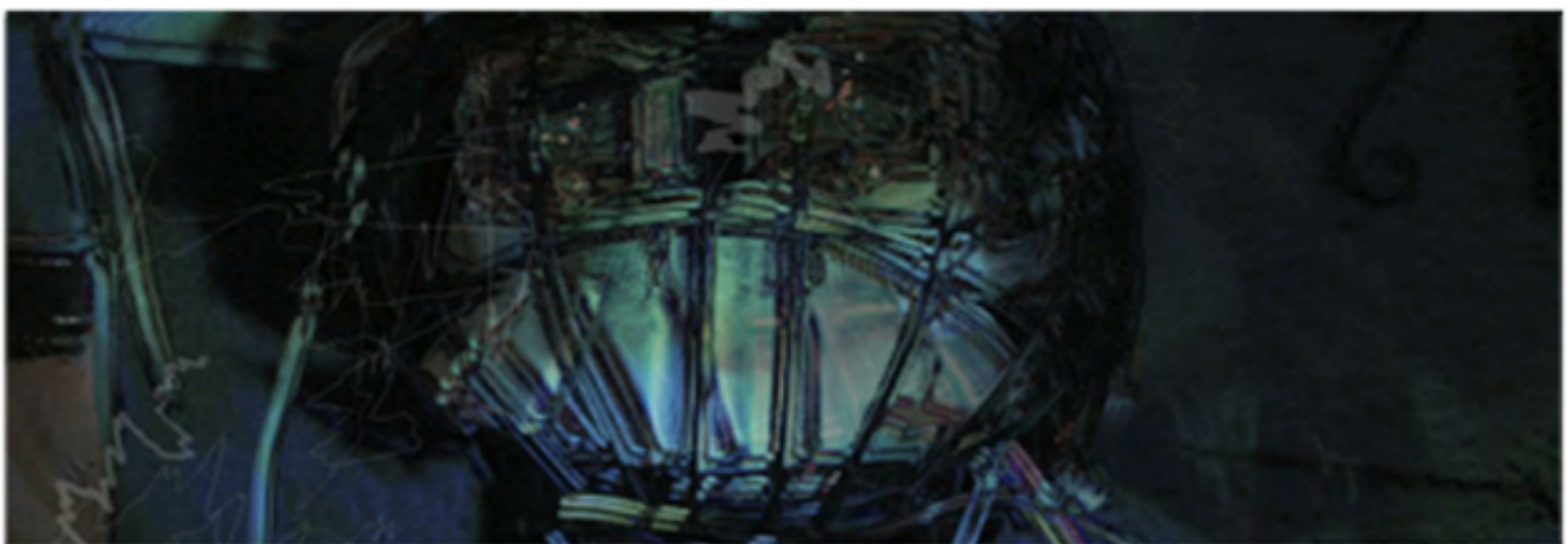
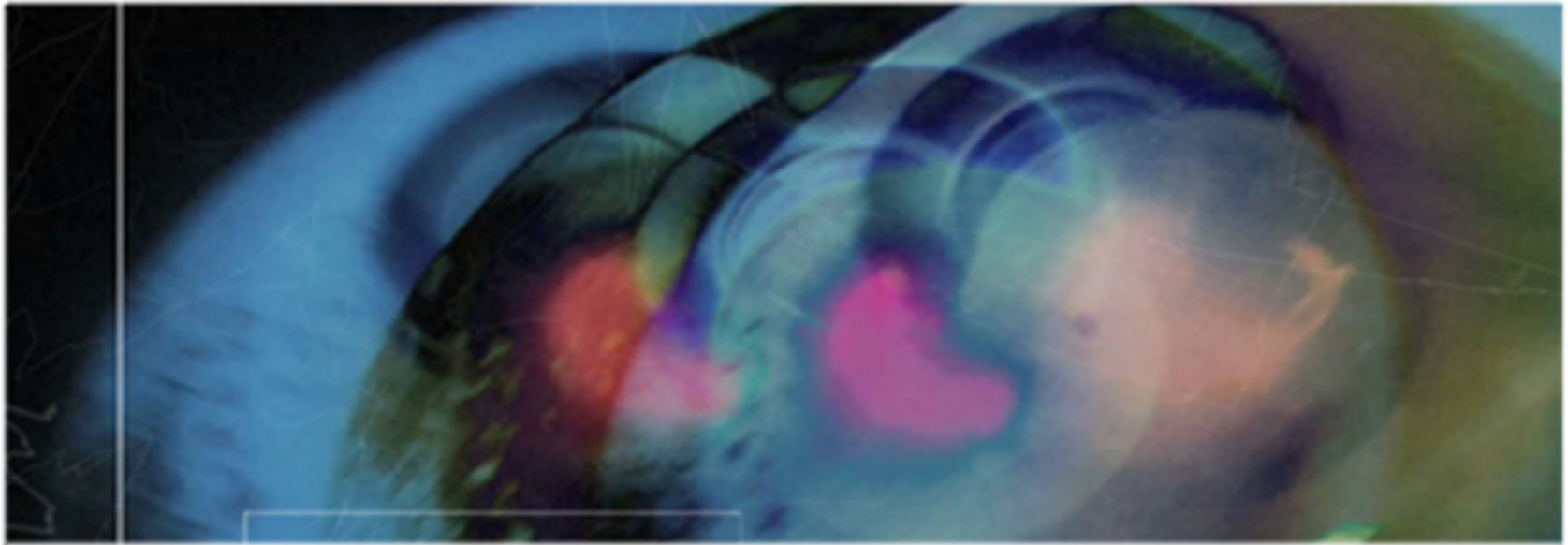




Jamshed; Spasmodic Anomaly

ART OF AMBROSE PEACOCK





Jamshed; Spasmodic Anomaly 1

Client - Chisholm Institute

Project Budget - 1 week planning, 3 weeks shooting. 2 weeks editing and 1 week finalizing.

Title - Jamshed; Spasmodic Anomaly1

Working Titles - The Jamshed Documentary
- The Jamshed Experience

Tags

- *A progressive rock sandwich with psychedelic sauces in toasted Jamshed bread!*
- *"It whipped a jack ass with a belt ! It was a jam session" Wesley Willis (on a seemingly unrelated issue).*
- *A reality TV show that is actually a reality*
- *A new pocket of documentary*

Log lines - A documentary about a place of freedom and rebellion, a humorous and surreal insight into one man's back shed. 'Jamshed; Spasmodic Anomaly' is to be a film that plays by the rules of the jamshed so as to capture and reproduce the experience of the Jamshed. To do this it is necessary to go all the way and organize a series of hell rides with the Jamshed Inhabitants into the heart of the Jamshed, to capture the Jamshed in its full swing of madness.



Jamshed; Spasmodic Anomaly - Synopsis

Synopsis - Inside a fridge looking out,. The door opens and closes things are put into and out of the fridge. As it opens a voice and music emerges. Location shots using google, a big red finger points to the Jamshed.

Night falls on the Eerie jamshed, flickers of people dancing. Music continues and Jefferson the found object sculpture begins the dialogue. Photographs of Jamshed nights flicker as the history of the place is spoken by Jefferson. The Making of a pentagram on carpet is shown between footage of 'Mindscope' the band playing.

The music is fading between shots of Ambrose moving strangely. A Robot arm with a computer screen pops up displaying the music status. The song ends.

An intermission with the screen in 4 screens and footage and vector animations. The sound of a drum scraping slowly.

Psychedelic animation of the inside of the jamshed and music by Iwo begins. Followed by more dialogue from Jefferson about the Jamshed's humble beginnings. Followed by a short introduction and history of the band 'Iwo' who used to use the Jamshed as practice space. Archival footage of Iwo playing live is faded back into the Jamshed using an old photo. Leading into cloudy footage of an empty jamshed. Dialogue of Iwo's demise continues. Telling of the band member's individual fall out from the group. The same music continues as random party photos and animation flicker. The Music Fades out and Jefferson's dialogue continues focused of the plight of Jason and Ambrose and the New Mindscope. Suddenly Footage of Jason and Ambrose's new band Mindscope is playing. The music changes mood and a 3-D Model of the Jam Shed rises up and the camera explores the room.

The song ends with a big finish. Jimi Hendrix 'Axis bold as love' begins and Michael is moving his head. Jefferson performs a short interview with Michael (a Jamshed inhabitant) about his feelings on the jamshed. A punch line from Jefferson and the credits roll, interrupted shortly by a dedication to Stella the dog (Rest in peace). The credits continue The music fades into a heavy rock song by Wesley Willis.

Was i weird last night productions logo and voice.



Jamshed; Spasmodic Anomaly

Spasmodic Insight

The rules of the Making of the Jamshed Documentary

1. To use the jamshed as a guide and the place for contemplating and brainstorming the documentary and the meaning of the Jamshed.

2. To film and record the Jamshed at a time which is relevant and significant to it's own importance and existence. *(Thus at a time which inhabitants are using it to be creative, destructive or to achieve altered/ higher states of consciousness. This means the production crew and director too).*

3. No Written scripts for dialogue no acting or planned action for the filming nights or 'hell rides' in the Jamshed, Relying instead on randomness and spontaneity of the situations, people sound and light.

This is all necessary to accomplish the best representation of the Jamshed experience.

Spasmodic - Irregular

Anomaly - Irregularity